



SeeQ®

AI & ML



connect





AI
Trailblazer



AI
Trailblazer

Seeq AI Assistant featuring British Sugar Use Case

Andres Barbaro

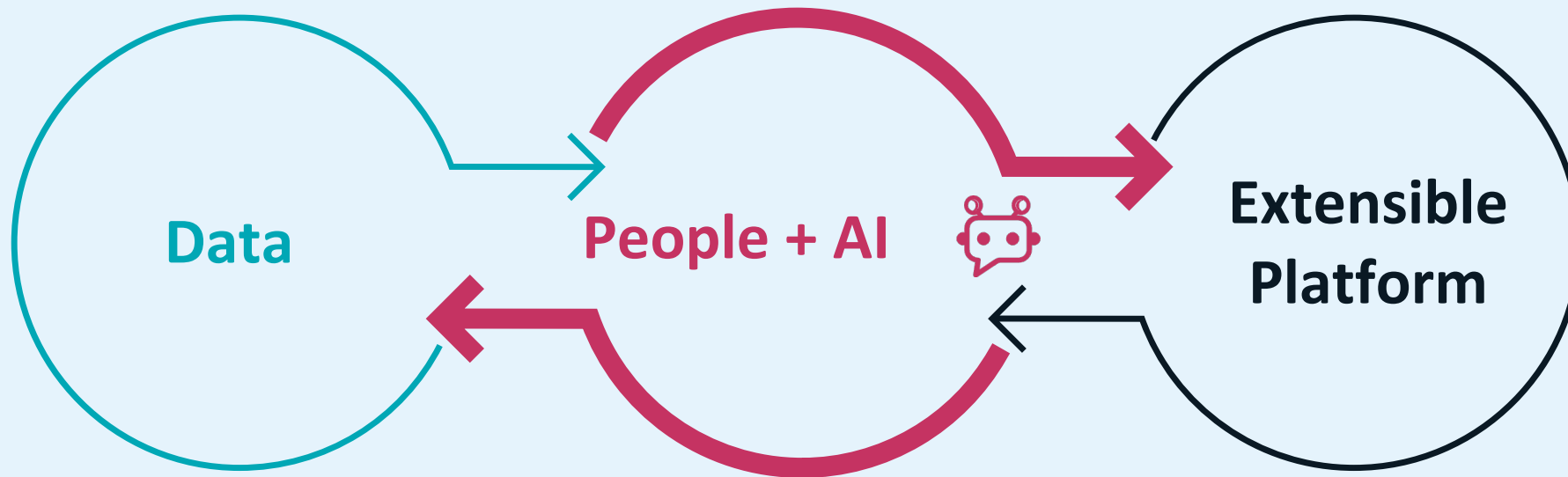
VP Engineering
Seeq

James Caws

Senior Automation & Analytics Engineer
British Sugar

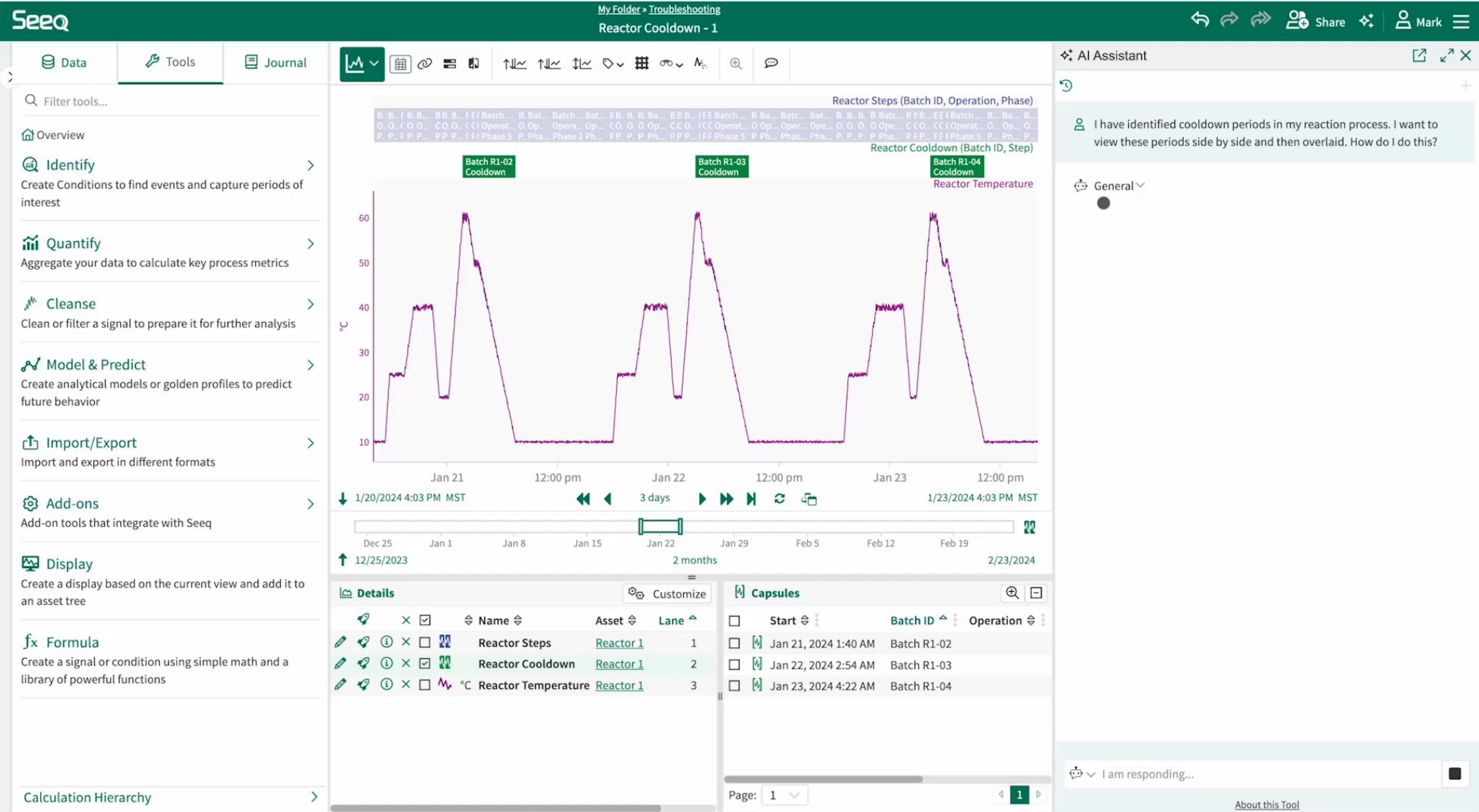
The Seeq AI Assistant

The private platform is infused with GenAI, augmented with process and analytics capabilities, informed by time series and SME context, driving traceable, profitable results two to eight times faster



Learn Faster and Do More with AI for Advanced Analytics

Empower SMEs with augmented capability for process analytics and ML



The AI Assistant Fits Right Into the Seeq Experience

“Cutting the time required to become an advanced analytics expert **by at least 50%.**”

“Completing tasks **eight times faster** and without interrupting other teams for help.”

“Ability to perform advanced calculations and **obtain knowledge that may otherwise have been lost.**”

“More time implementing the solution and **less time trying to discover the problem itself.**”

“I was seriously stuck on something Friday in Data Lab. **This Assistant has been AMAZING today.**”

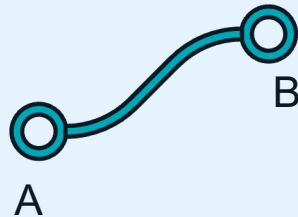
It’s going to potentially **change how we do our data collection** in the future because **it’s just so much data/wrangling that’s eliminated**

“Holy cow man, **that is incredible.**”

Seeq AI Assistant – Users into Visionaries

Learn Faster and Do More

How do I ...



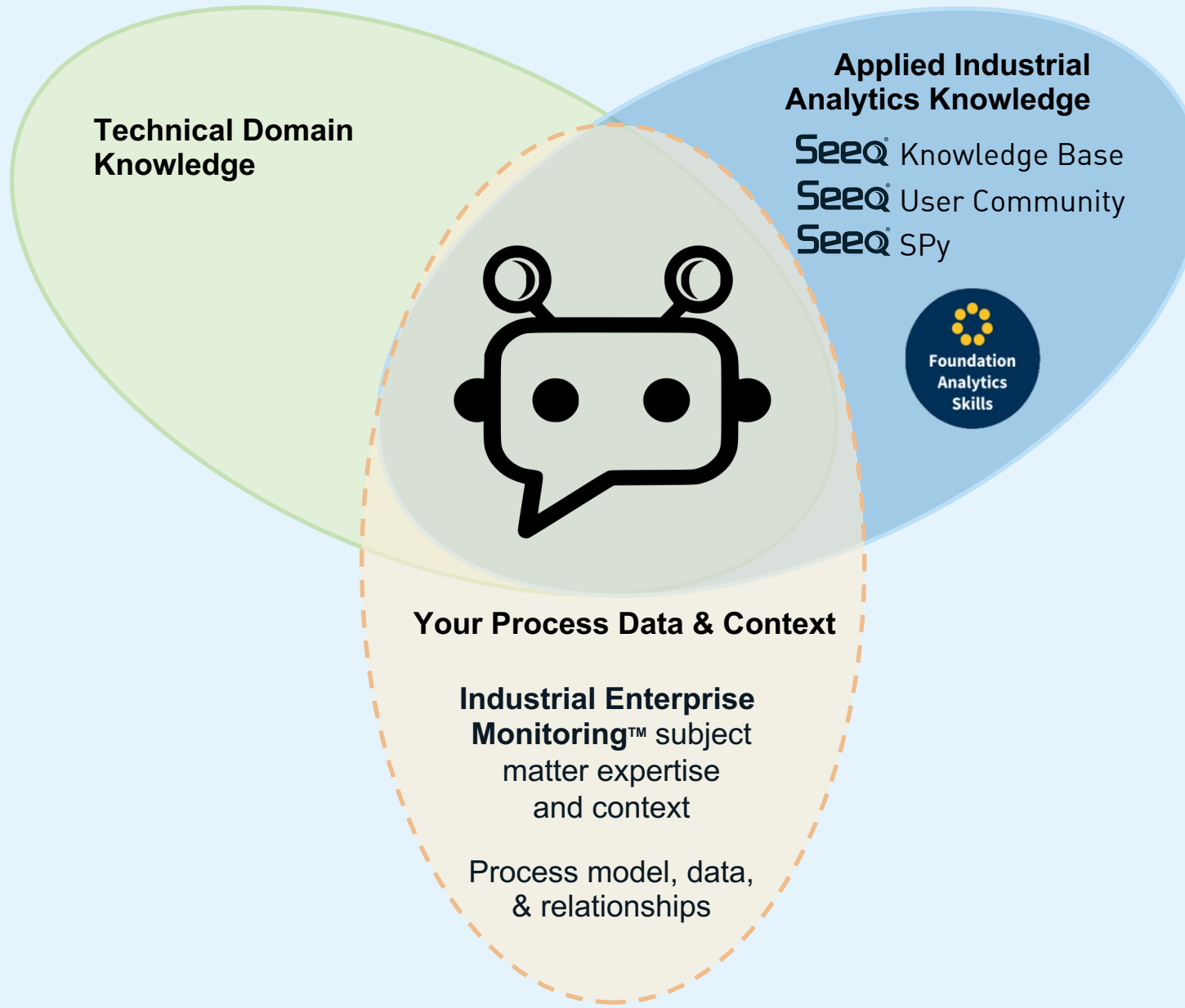
Scale Your Expertise

What are today's top priorities ...



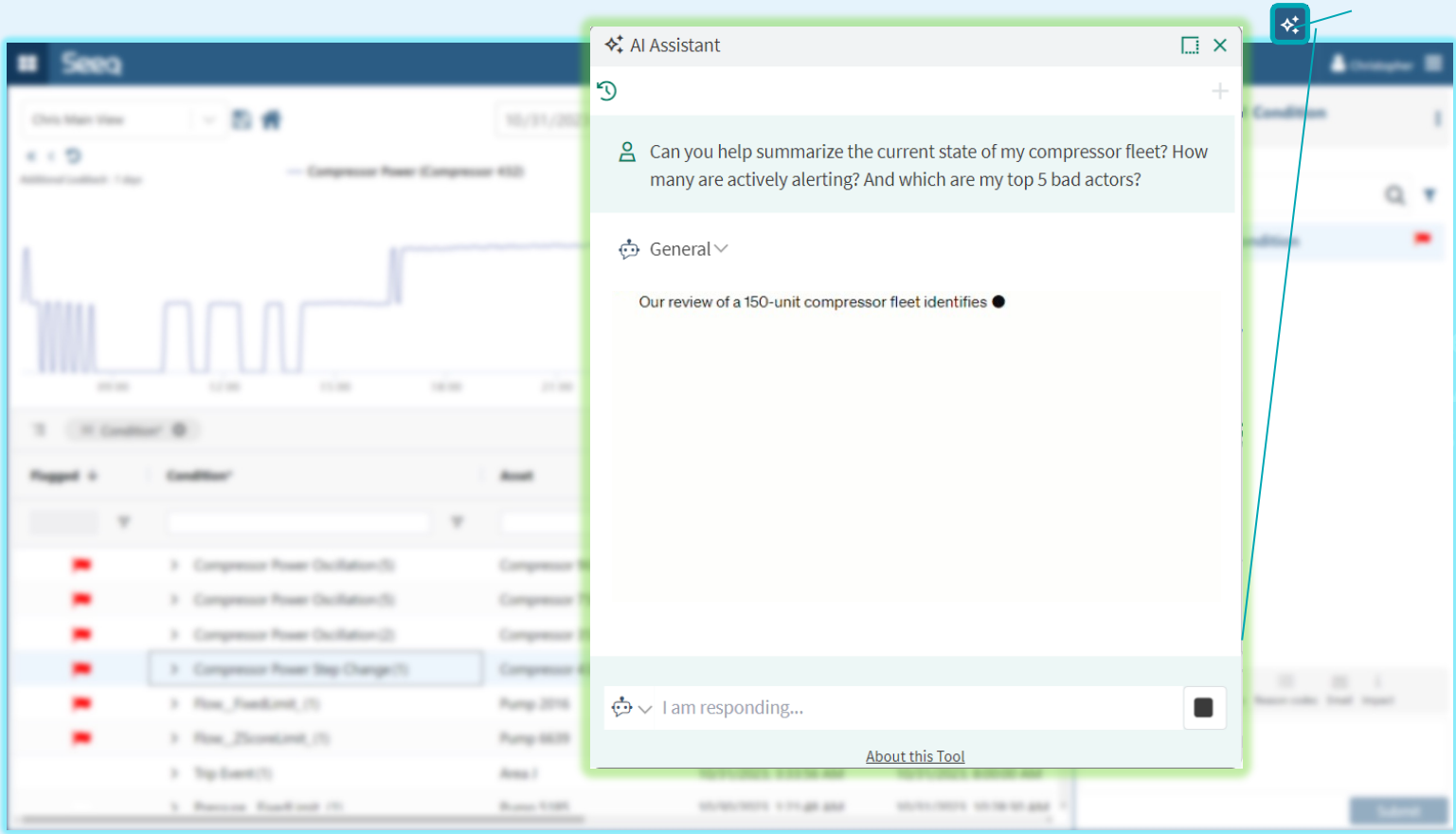
Available: Learn Faster and Do More – **NOW**, Scale Your Expertise – **Q4 '24**, Requires Industrial Enterprise Monitoring

What makes the Seeq AI Assistant unique?

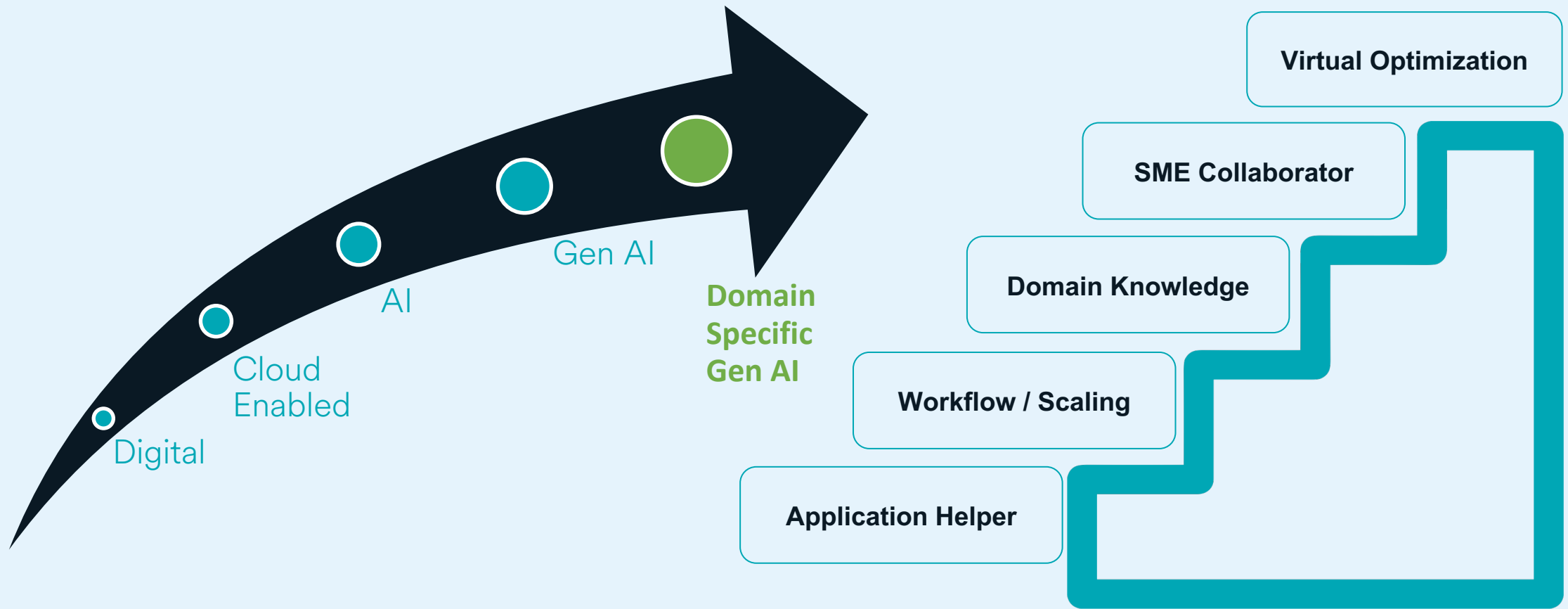


Scale Your Expertise with AI for Industrial Enterprise Monitoring™

Empower subject matter experts with a **safe and secure second opinion** that is familiar with their specific system, data and team context.



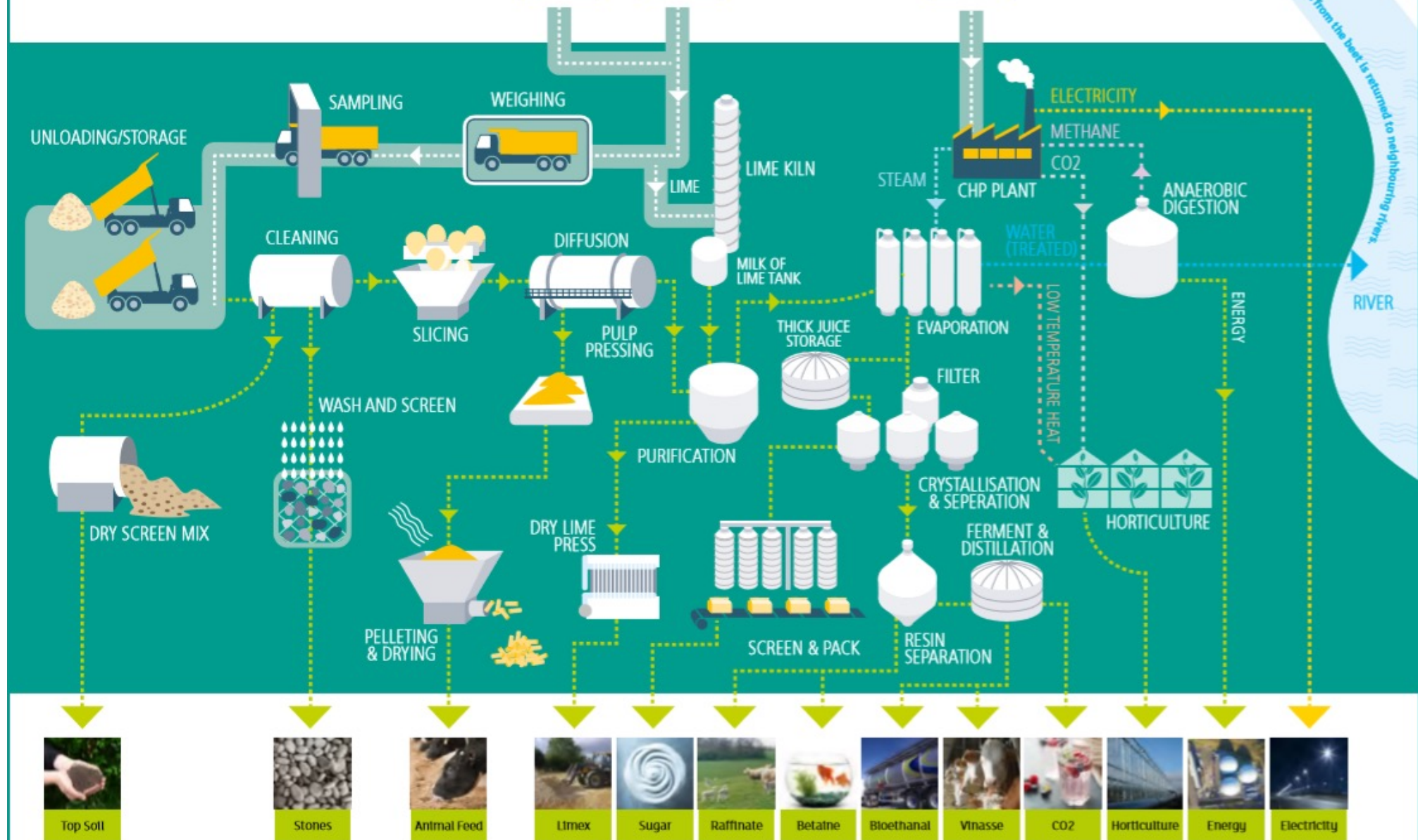
The Next Evolutions in Gen AI



Introduction to British Sugar



co-products



The Problem - what does it take to make technical decisions in the factory?

Gain 10 years + experience

Grad

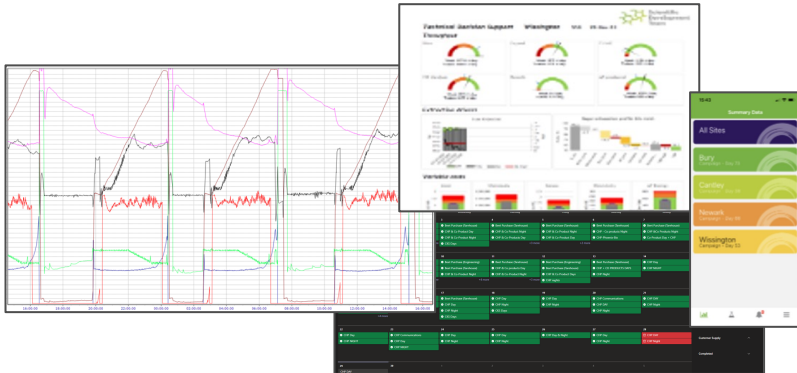
Shift
Mgmt

Proc.
Lead

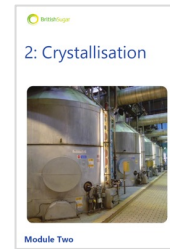
APU
Lead

Ops
Mgmt

Look in lots of places for data



Consume masses of
information



Talk to lots of people

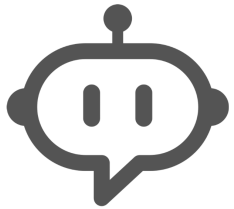


SHOTGUN VS RIFLE

Advanced Insight Centre



Capture 100+ Years of Knowledge - embed subject matter expertise into automated analytics



24/7 Digital Assistance



Real-time, data-driven decision making

AI Assistant Proof of Concept

Ask the Seeq AI Assistant a question about our data



AI searches for conditions in Seeq defined by subject matter experts

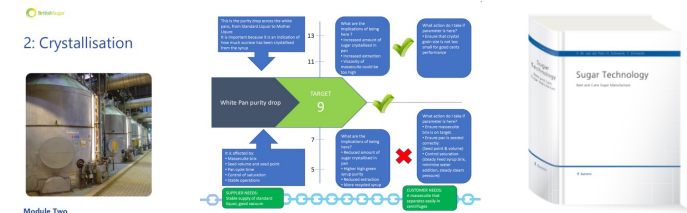


AI searches corporate documents for relevant information about the situation, impacts, potential causes and suggested actions



The AI assembles a response specific to a persona

“Has anything gone wrong with crystallisation in the last 24 hours?”



“Within the last 24 hours, there has been 2 occurrences of Pan 4 High Saturation at Seed, which could impact product quality. When checking for root causes, there have also been high brix at seed events and the microwave brix instrument reading is questionable. It would be worth performing a calibration of the microwave brix meter.”

What if?

A trainee process operator could ask the most experienced technician 24/7:

“A laboratory result for SO₂ in thin juice came back as high. Explain the impact of this and search for root causes.”



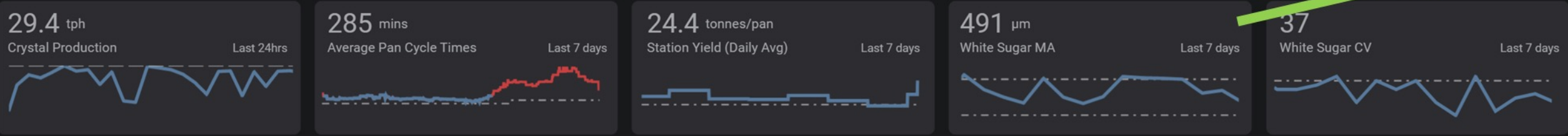
A subject matter expert responsible for optimization of a unit across multiple factory locations could quickly focus their time on the biggest opportunities:

“Give me a prioritized list of current opportunities within my area across all factories”

A plant manager travelling into work in the morning could ask:

“Give me a production summary report for the last 24 hours”





Dissolver Inputs

Pan Cycle Diagnostics

63.7

TJ Flow

4728

Wash Syr Colour

-0.54

Raw Rec Rate

67.1

TJ Brix

91.8

Wash Syr Purity

2250

Raw Colour

2874

TJ Colour

40

Separation Time

1519

Aff Colour

94.1

TJ Purity

38.1

W Cent Calc tph

7910

AP Colour

Asset	Phase Times (Last Cycle vs 24hr Average)						Checks				Controller Deviations in Feed		
	Whole	Vac Raise	Boildown	Seed	Feed	Brix Up	DSat @ Seed	Brix Meters	Loss of circ.	Dropping Bx	Brix	Steam	Vacuum
Pan A1	<div></div>	<div></div>	<div></div>	<div></div>	<div></div>	<div></div>	✓	✓	✓	✓	✓	✓	✓
Pan A2	<div></div>	<div></div>	<div></div>	<div></div>	<div></div>	<div></div>	✗	✓	✓	✓	✓	✓	✓
Pan A3	<div></div>	<div></div>	<div></div>	<div></div>	<div></div>	<div></div>	✓	✓	✓	✓	✓	✓	✓
Pan A4	<div></div>	<div></div>	<div></div>	<div></div>	<div></div>	<div></div>	✓	✓	✓	✓	✓	✓	✓
Pan A5	<div></div>	<div></div>	<div></div>	<div></div>	<div></div>	<div></div>	✓	✓	✓	✓	✓	✗	✓

White Pan Inputs

71.0

Std Liq Brix

3164

Std Liq Colour

94.8

Std Liq Purity

77.1

Conc Liq Brix

1017

Vapour Pressure

133

Vacuum Header

Auto-pilot

Enabled

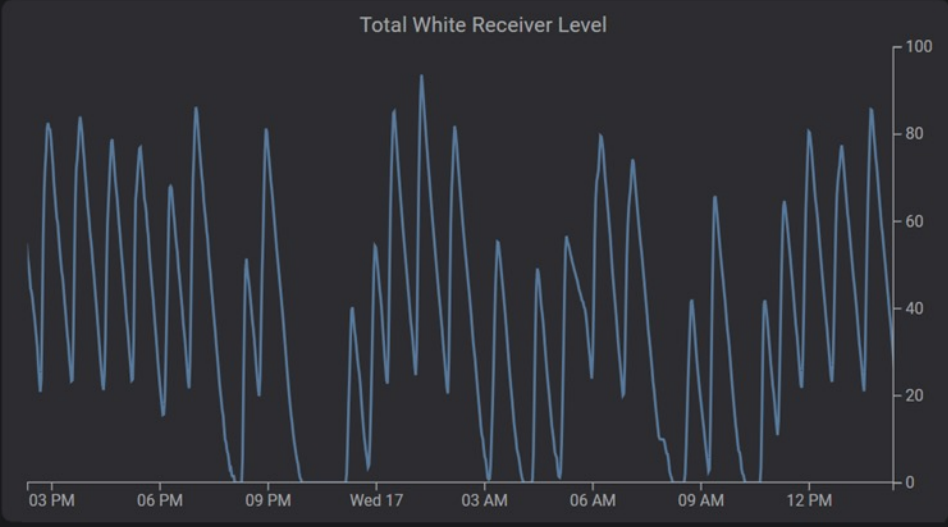
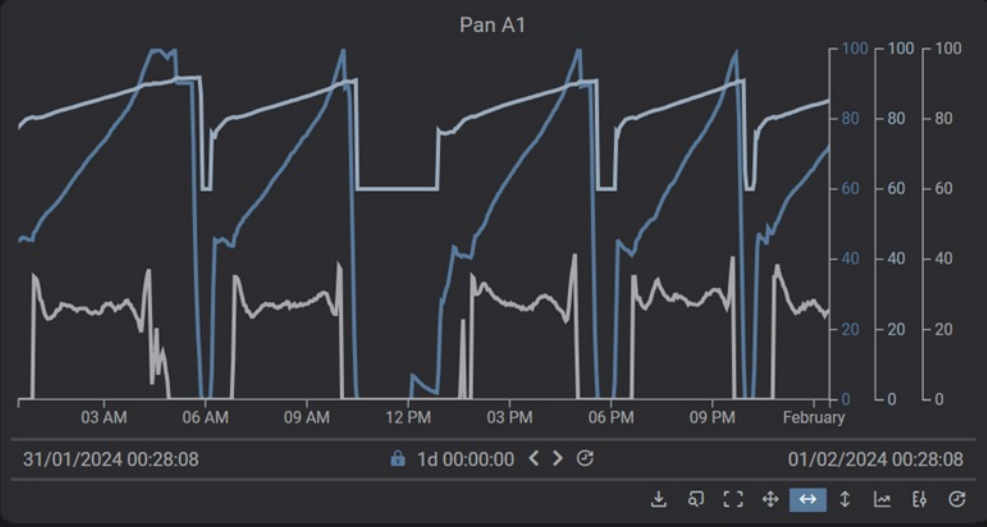
Pan Scheduling

Enabled

Auto Yield Adj.

Enabled

SLE Scheduling





How can I help?

Production

What was the production the first week of the month?

Process Issues

What issues occurred on March 1st?

Process Knowledge

What are white pans used for?



Ask me about Insights



Summary



Challenge

- Need to capture corporate knowledge before it is lost
- Make this available to everyone 24/7



Solution

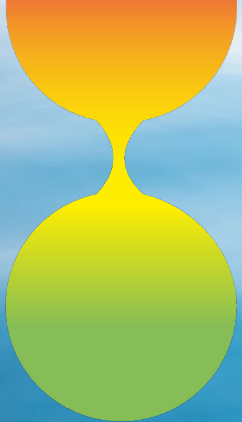
- Proof of Concept using Seeq AI Assistant
- Augmented with our Seeq analytics and documents



Results

- Successful real-world test
- Looking forward to this being part of the Seeq offering
- Thank you to the Seeq team





Q&A



Thank You